

JW John Wood

Powered by  **TAKAGI**
Tankless Water Heaters

RESIDENTIAL TANKLESS WATER HEATERS



Residential Tankless Water Heaters

Quality. Service. Reliability.

John Wood® powered by Takagi offers a wide variety of tankless products to match the needs of today's average household.

A full product line of state-of-the-art residential tankless water heaters, that include a condensing model, are all ENERGY STAR® qualified and provide a minimum 0.82 EF.

John Wood® powered by Takagi is your solution for endless hot water.



Product Features

- ENERGY STAR® qualified
- Technology to meet today's demands
 - Growing demands throughout the home require a consistent, never-ending supply of hot water
- Energy Savings
 - Plenty of hot water delivered in the most energy-efficient way possible
- Eco-conscious
 - Energy efficient: 82-90%
 - Use less energy: 20-50% energy savings compared to standard water heater
 - Efficient use of hot water
- 12-Year Residential Heat Exchanger Warranty
- Condensing Model Available - Model JWT-520H
 - 90% energy efficient
 - Direct Vent design
 - Vents with ULC S636 PVC or CPVC or Category III/IV Stainless Steel
 - Link up to 4 units to provide 36 gallons maximum flow rate
 - Displays temperature and error codes for easy troubleshooting
 - Zero clearance to combustibles



JWT-520H



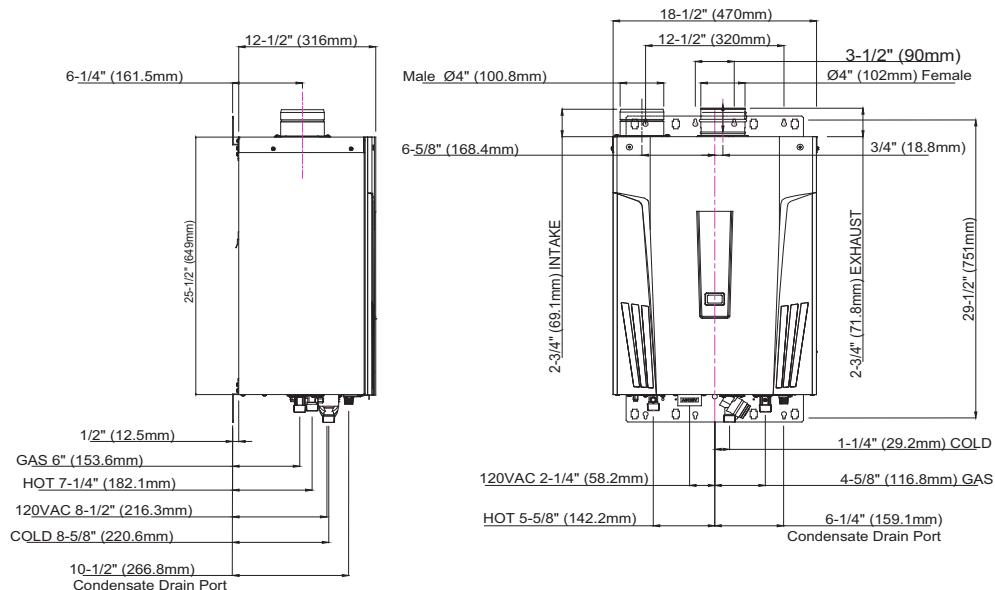
JWT-520H 4.7 GPM*

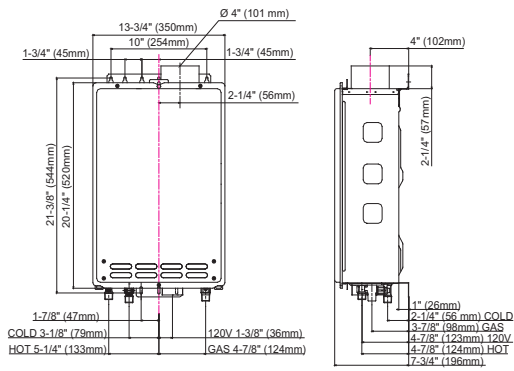
*70° temperature rise

Installation Type	Direct Vent - Indoor Installation Only	
Dimensions	25.6" (H) x 18.5" (W) x 12.4" (D), Weight: 73lb	
Electric Consumption	120 VAC; Standby: 0.07A, Operation: 1.27A, Freeze-Protection: 1.73A	
Fuel	NG	LP
Gas Consumption Input	Min 13,000 BTU/h	Min 13,000 BTU/h
	Max 199,000 BTU/h	Max 199,000 BTU/h
Energy Factor	0.90	0.90
Inlet Gas Pressure	Min 5.0" W.C.	Min 8.0" W.C.
	Max 10.5" W.C.	Max 14.0" W.C.
Flow Rate	Max 9.0 GPM	
Water Pressure	15-150 psi	Pressure Only Relief Valve Required (Min 200,000 BTUs. 150 psi) 40 psi or above recommend for maximum flow
Multiple Unit Installation	Easy-Link System	Up to 4 units
Temperature Setting	With PCB Push Buttons	100°F, 105°F, 110°F, 115°F, 120°F (Default), 125°F, 135°F, 140°F, 145°F, 150°F, 155°F, 160°F, 165°F, 170°F, 175°F and 185°F (16 options)
	With TM-RE30 Temperature Remote Controller	100°F to 185°F with 5°F intervals (18 options), 120°F Default Factory Setting
Warranty (years)	Residential	12 Heat Exchanger / 5 Parts
	Commercial	5 Heat Exchanger / 5 Parts

Product Features

- 90% energy efficiency
- ULC S636 PVC or CPVC Venting can be used in all applications
- 0" Clearance to combustibles
- Up to 16 different temperature settings without a remote
- Built-in temperature and error code display
- CSA certified software
- Air Fuel Ratio (AFR) Sensor
- Robust temperature safety controls to protect PVC venting
- Uses HRS copper for primary heat exchanger and Stainless Steel #316L for secondary heat exchanger
- 3 digit display window that shows temperature and error codes for easy trouble shooting
- PVC adapter included





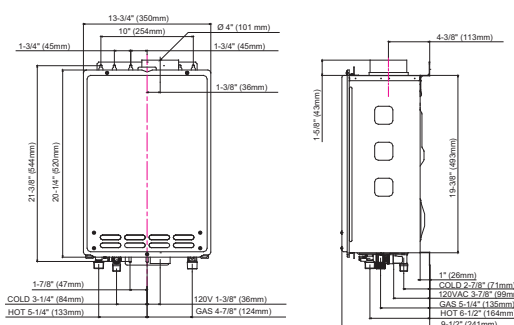
JWT-110 3.3 GPM*

*70° temperature rise

Installation Type	Power Vent - Indoor installation only (Direct-vent convertible)	
Dimensions	20.5" (H) x 13.8" (W) x 6.7" (D), Weight: 33lb	
Electric Consumption	120 VAC; Standby: 0.05A, Operation: 0.61A, Freeze-Protection: 0.93A	
Fuel	NG	LP
Gas Consumption Input	Min 19,500 BTU/h	Min 19,500 BTU/h
	Max 140,000 BTU/h	Max 140,000 BTU/h
Energy Factor	0.82	0.83
Inlet Gas Pressure	Min 5.0" W.C.	Min 8.0" W.C.
	Max 10.5" W.C.	Max 14.0" W.C.
Flow Rate	Max 6.6 GPM	
Water Pressure	15-150 psi	Pressure Only Relief Valve Required (Min 200,000 BTUs. 150 psi)
		40 psi or above recommend for maximum flow
Temperature Setting	Without Remote (Dipswitch Setting)	113°F, 122°F (Default), 131°F, and 140°F
	With TM-RE02 Temperature Remote Controller: 99°F to 167°F, 122°F Default	99°F, 100°F, 102°F, 104°F, 106°F, 108°F, 109°F, 111°F, 113°F, 115°F, 117°F, 122°F (Default), 131°F, 140°F, 158°F, and 167°F
	Factory Setting	
Warranty (years)	Residential	12 Heat Exchanger / 5 Parts
	Commercial	3 Heat Exchanger / 3 Parts

Product Features

- ENERGY STAR® Qualified
- Increased flow rate
- Vents with Category III/IV Stainless Steel
- Safety Features: Air-Fuel Ratio (AFR) Sensor, Exhaust & Water Temperature, Overheat Cutoff Fuse



JWT-310 4.4 GPM*

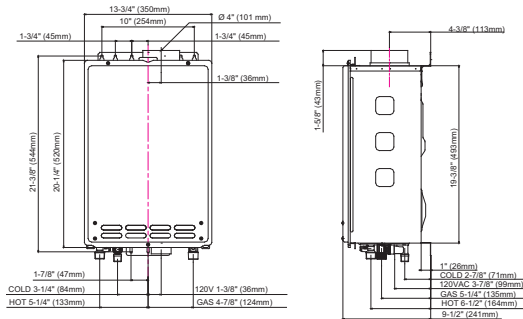
*70° temperature rise

Installation Type	Power Vent - Indoor installation only (Direct-vent convertible)	
Dimensions	20.5" (H) x 13.8" (W) x 8.5" (D), Weight: 38lb	
Electric Consumption	120 VAC; Standby: 0.05A, Operation: 0.73A, Freeze-Protection: 0.93A	
Fuel	NG	LP
Gas Consumption Input	Min 11,000 BTU/h	Min 11,000 BTU/h
	Max 190,000 BTU/h	Max 190,000 BTU/h
Energy Factor	0.82	0.82
Inlet Gas Pressure	Min 5.0" W.C.	Min 8.0" W.C.
	Max 10.5" W.C.	Max 14.0" W.C.
Flow Rate	Max 8.0 GPM	
Water Pressure	15-150 psi	Pressure Only Relief Valve Required (Min 200,000 BTUs. 150 psi)
		40 psi or above recommend for maximum flow
Temperature Setting	Without Remote (Dipswitch Setting)	113°F, 122°F (Default), 131°F, and 140°F
	With TK-RE02 Temperature Remote Controller: 99°F to 167°F, 122°F Default	99°F, 100°F, 102°F, 104°F, 106°F, 108°F, 109°F, 111°F, 113°F, 115°F, 117°F, 122°F (Default), 131°F, 140°F, 158°F, and 167°F
	Factory Setting	
Warranty (years)	Residential	12 Heat Exchanger / 5 Parts
	Commercial	3 Heat Exchanger / 3 Parts

Product Features

- ENERGY STAR® Qualified
- Increased flow rate
- Improved scale reduction software
- Safety Features: Air-Fuel Ratio (AFR) Sensor, Exhaust & Water Temperature, Overheat Cutoff Fuse
- Vents with Category III/IV Stainless Steel

Remote included



JWT-510 4.7 GPM*

*70° temperature rise

Installation Type	Power Vent - Indoor Installation only (Direct-vent convertible)	
Dimensions	20.5" (H) x 13.8" (W) x 8.5" (D), Weight: 38lb	
Electric Consumption	120 VAC; Standby: 0.05A, Operation: 0.75A, Freeze-Protection: 0.93A	
Fuel	NG	LP
Gas Consumption Input	Min 11,000 BTU/h	Min 11,000 BTU/h
	Max 199,000 BTU/h	Max 199,000 BTU/h
Energy Factor	0.82	0.82
Inlet Gas Pressure	Min 5.0" W.C.	Min 8.0" W.C.
	Max 10.5" W.C.	Max 14.0" W.C.
Flow Rate	Max 10.0 GPM	
Water Pressure	15-150 psi	Pressure Only Relief Valve Required (Min 200,000 BTUs. 150 psi)
		40 psi or above recommend for maximum flow
Multiple Unit Installation	Easy Link	Up to 4 units
Temperature Setting	Without Remote (Dipswitch Setting)	104°F, 113°F, 122°F (Default), 131°F, 140°F, 158°F, 176°F, and 185°F
	With TM-RE30 Temperature Remote Controller: 99°F to 185°F, 122°F Default	99°F, 100°F, 102°F, 104°F, 106°F, 108°F, 109°F, 110°F, 111°F, 113°F, 115°F, 117°F, 122°F (Default), 131°F, 140°F, 158°F, 167°F, 176°F, and 185°F
	Factory Setting	
Warranty (years)	Residential	12 Heat Exchanger / 5 Parts
	Commercial	5 Heat Exchanger / 5 Parts

Product Features

- ENERGY STAR® Qualified
- Increased flow rate
- Improved scale reduction software
- Vents with Category III/IV Stainless Steel
- Safety Features: Air-Fuel Ratio (AFR) Sensor, Exhaust & Water Temperature, Overheat Cutoff Fuse

Residential Flow Rate Guide - temperature rise vs. gallons per minute

Temp Rise (°F)	JWT-110	JWT-310	JWT-510	JWT-520H
30	6.8	8.0	10.0	9.0
35	6.8	8.0	9.3	9.0
40	5.7	7.8	8.1	9.0
45	5.1	6.9	7.2	8.1
50	4.6	6.2	6.5	7.3
55	4.2	5.7	5.9	6.7
60	3.8	5.2	5.4	6.1
65	3.5	4.8	5.0	5.6
70	3.3	4.4	4.7	5.2
75	3.1	4.1	4.3	4.9
80	2.9	3.9	4.1	4.6
85	2.7	3.7	3.8	4.3

Flow rate is determined by temperature rise. To determine your temperature rise, subtract the incoming water temperature from the set output temperature. All units are factory set to 120°F to 122°F but can be changed. Flow rates are based on default set temperatures.

GSW Warranty:

Warranty does not include labour. Consult warranty information enclosed with heater for complete details.



For more information, visit our website at:
www.johnwoodwaterheaters.com

GSW Water Heating

599 Hill Street West
Fergus, Ontario, Canada N1M 2X1
Sales/Customer Service: 1-888-599-2837
Fax: 1-519-787-5500
Technical Support and Warranty: 1-888-479-8324
E-mail: info@gswh.com