

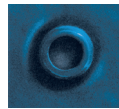


Indirect Water Heaters

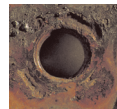


Exclusive, patented innovation.

The exclusive and patented TankSaver® design works to prolong tank life. TankSaver® impedes corrosion by guarding metal tank openings from exposure and keeping them watertight. The durable construction virtually eliminates rust.



With TankSaver®



Without TankSaver®

HIGH QUALITY FEATURES

- Equipped with an adjustable thermostat, pre-wired and ready for connection to a circulator pump for accurate and automatic temperature control
- Factory-installed nipples for easy installation
- Galvanized steel bottom pan resists corrosion
- Glass-lined coil for efficient heat transfer
- Full 2" CFC-free foam insulation for energy efficiency
- Glass-lined inner tank and sacrificial magnesium anodes extend tank life
- Clean-out port for lime removal on 75 gallon models
- 3/4" NPT boiler connections



CAPACITY & PERFORMANCE

MODEL NO.	CAPACITY (USG/Litres)	BOILER OUTPUT BTU	FIRST HR. RATING 90°F (50°C) rise/hr USG/litres	CONTINUOUS FLOW USG/litres	COIL LENGTH in/cm
JW5-30IT/JW10-30IT	30 / 110	40,000	70 / 265	69 / 261	29 / 74
		60,000	98 / 371	104 / 344	
		80,000	125 / 473	139 / 526	
		100,000	152 / 575	173 / 655	
JW5-40IT/JW10-40IT	40 / 150	40,000	84 / 318	69 / 261	39-1/2 / 100
		60,000	111 / 420	104 / 394	
		80,000	138 / 522	139 / 526	
		100,000	165 / 625	173 / 655	
JW5-75IT/JW10-75IT	75 / 300	40,000	120 / 454	70 / 265	47-1/4 / 120
		60,000	148 / 560	105 / 397	
		80,000	175 / 662	140 / 530	
		100,000	201 / 761	174 / 659	
		120,000*	229 / 867	209 / 791	

ROUGH-IN DIMENSIONS

MODEL NO.	A in/cm	B in/cm	C in/cm	D in/cm	SHIPPING WEIGHT lbs/kg
JW5-30IT/JW10-30IT	32 / 81	34 / 86	35 / 89	22 / 56	130 / 59
JW5-40IT/JW10-40IT	42-1/2 / 108	44 / 112	45-1/2 / 116	22 / 56	160 / 73
JW5-75IT/JW10-75IT	53 / 135	54 / 137	56 / 142	26 / 66	270 / 122

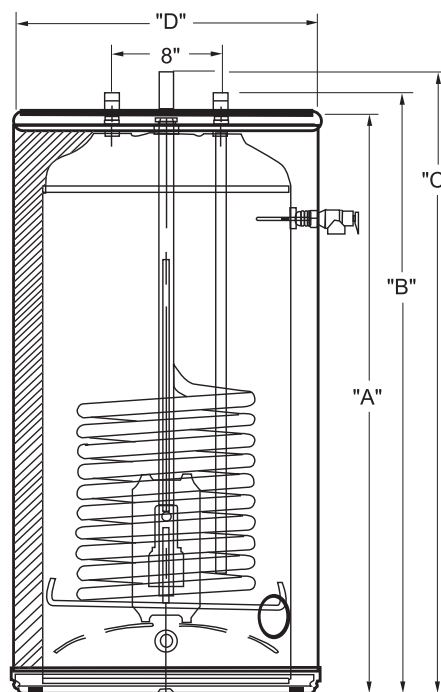
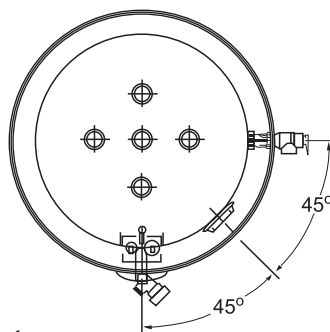
* When the boiler input exceeds 100,000 BTU/H and if the unit has a factory supplied T&P valve, it must be replaced with one rated for that input. Due to our policy of continuous product improvement, specifications may change without notice. Consult the factory for details on latest specifications.



For more information, visit our website at:
www.johnwoodwaterheaters.com

GSW Water Heating

599 Hill Street West
 Fergus, Ontario, Canada N1M 2X1
 Sales/Customer Service: 1-888-599-2837
 Fax: 1-519-787-5500
 Technical Support and Warranty: 1-888-479-8324
 E-mail: info@gsw-wh.com



GSW Warranty:

All John Wood® Indirect Water Heats will be replaced free of charge in case of tank leakage within 5 or 10 (depending on the model purchased) years from the date of installation in domestic applications and 1 year in commercial applications. All parts supplied are warranted for 1 year. Warranty does not include labour. Consult owner's manual for complete details.